

# GLOCK Slimline MOS

Accompanying Sheet



www.glock.com

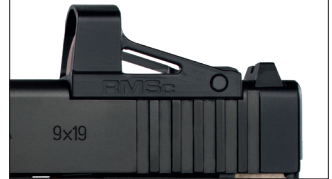
with Cover Plate



without Cover Plate/Optic



with Optic



\*Optic not included

## Parts



### SCREWS

2 units TX10, M4x7.5 Torx® screws to install the GLOCK Cover Plate. Screws come with drop of glue applied.

**Make sure to use only these screws for fixing the cover plate.**



### 3. SCREWDRIVER

Torx® Screwdriver (TX10)

### ⚠ WARNING!

Only fire the GLOCK MOS Pistol Models with the GLOCK Cover Plate mounted or an Optical Sight installed.

### NOTICE!

The GLOCK 43X and 48 models with a MOS configuration have slide cuts designed for specific micro-optics and do not include adapter plates. Please consult the manufacturer of your optic of choice for compatibility.

### NOTICE!

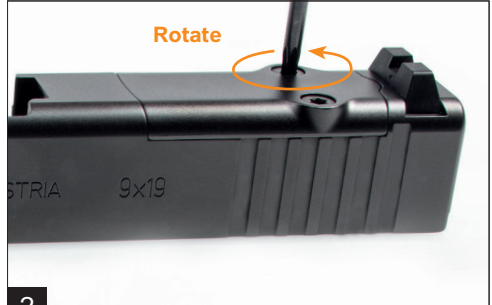
GLOCK recommends a periodic check of coverplate or optic screws to ensure tightness.

# GLOCK MOS (Modular Optic System) Slimline Pistol Models



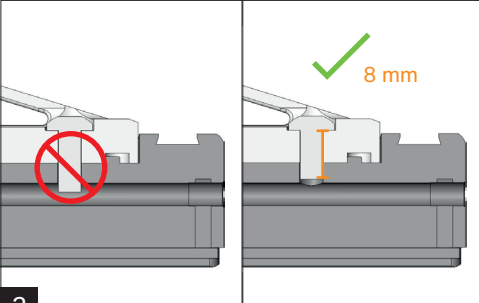
1

Complete the Safety check and Field Strip steps as indicated in the GLOCK Instructions for use. Place the slide of your pistol on a flat surface making sure that the recoil spring guide ring overlaps the surface.



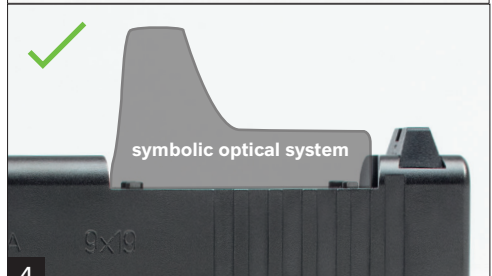
2

Remove the GLOCK Cover Plate.



3

To mount the MOS sight on your slide, make sure to use a M4x8 mm flat-headed screw. Warning: If the thread length of the screw exceeds 8 mm, it may cause damage to the weapon and/or may cause malfunction.



4

Only shoot your GLOCK MOS Pistol with correctly installed GLOCK Cover Plate or optical system.



**WARNING: Cancer and Reproductive Harm – [www.P65Warnings.ca.gov](http://www.P65Warnings.ca.gov)**